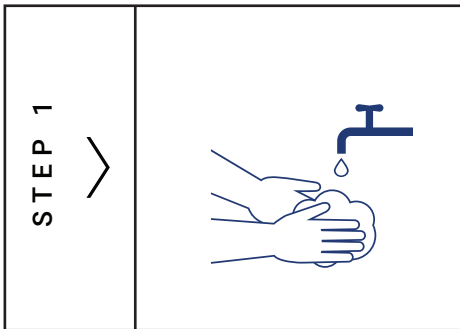
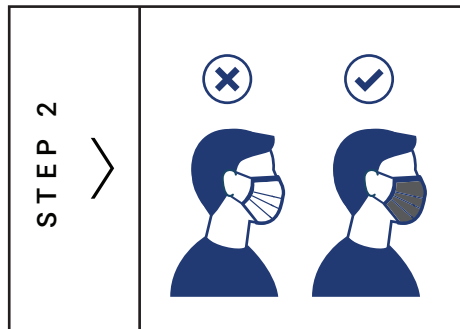


# COVID - 19

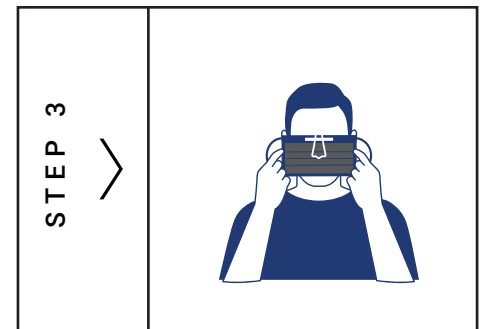
## Guide for wearing procedure masks



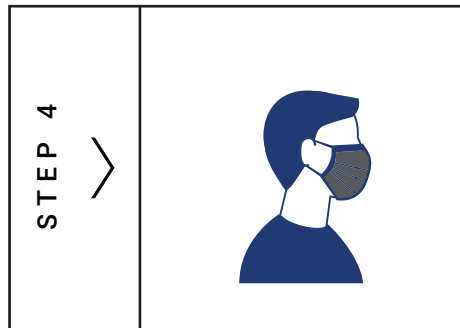
Wash your hands before wearing a mask.



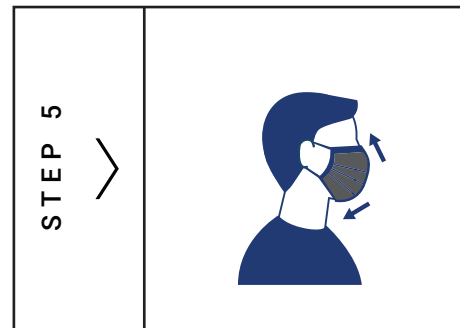
Ensure the proper side of the mask faces outwards.



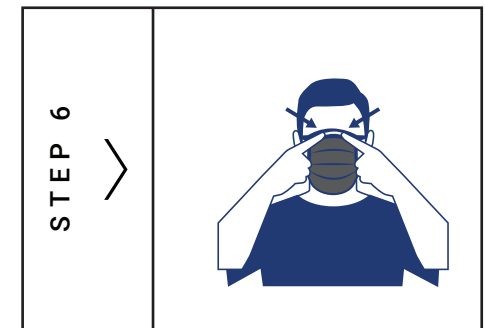
Locate the metallic strip and place it on the nose bridge.



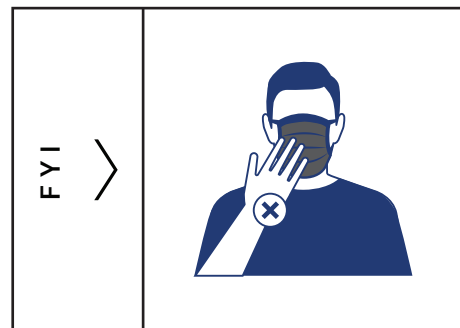
Secure the strings behind your head or over your ears.



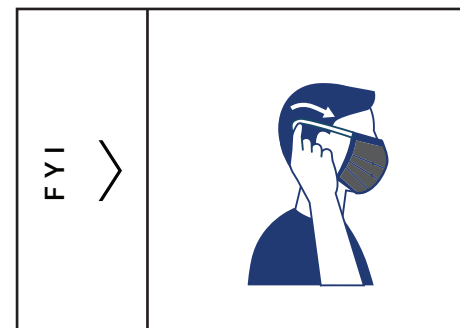
Cover mouth and nose fully making sure there are no gaps.



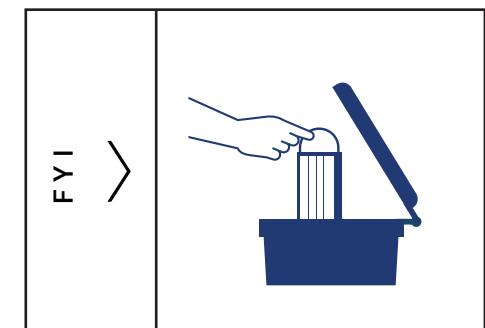
Press the metallic strip to fit the shape of the nose.



Do not touch the mask while using it, if so, wash your hands.



Remove the mask from behind by holding the strings with clean hands.



Dispose the mask in a closed bin without touching the front.